



CRANBERRIES IN THE CLASSROOM



HOW DO CRANBERRIES GROW?



All things have life cycles – frogs, birds, humans and even plants. Cranberries have a 16-month life cycle – that’s more than one year! Cranberries do not grow in water. They grow on vines in beds that have sand, peat, gravel and clay. The beds are called bogs. The bogs are flooded with water when it’s time to harvest them. Picking cranberries is called harvesting. [Click here](https://bit.ly/373fonp) or visit <https://bit.ly/373fonp> to learn more.



WINTER	The bogs are flooded with water in the winter. The water freezes over the plants. Sand is spread on top of the ice. This protects the cranberry plants during the cold winters. Cranberry plants are dormant, or resting, during the winter.
SPRING	In spring the ice melts and the sand falls to the ground. The water goes back to the rivers and reservoirs. There are two buds on cranberry plants. The buds that sprout into flowers in the spring. And, a new bud grows that will produce fruit the next year.
SUMMER	Cranberry plants need water, sun and space to grow. They need up to one inch of water each week during growing season. Bees are brought in by the farmer to help pollinate the flowers, so they will turn into berries. The vines can grow to be more than 6 feet long. The flowers turn into hard green berries.
FALL	The cranberry bogs are flooded with water. Cranberries have four air pockets, so they float in water. The berries float to the top of the water. Cranberries are harvested using an eggbeater, boom and rakes. Berries go up a big tube into the trucks that take them to the factories. They are turned into cranberry juice, Craisins® dried cranberries and cranberry sauce for Thanksgiving!





CRANBERRIES IN THE CLASSROOM

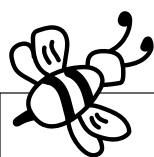


HOW DO CRANBERRIES GROW?

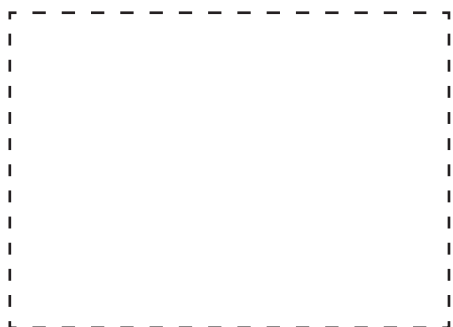


CRANBERRY LIFE CYCLE

Use the How do cranberries grow page to complete this activity. Cut out the pictures on the first page using help from an adult. Paste the pictures in the correct square. Write what season this is below the picture.



Berries turn red,
cranberry harvest.



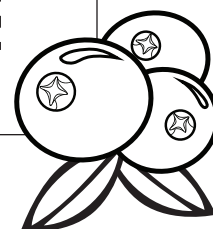
Plants are dormant (resting),
bogs are flooded and freeze.



Bees pollinate the flowers,
berries and leaves turn green.



New buds form for fruit next year,
buds turn into flowers.






CRANBERRIES IN THE CLASSROOM

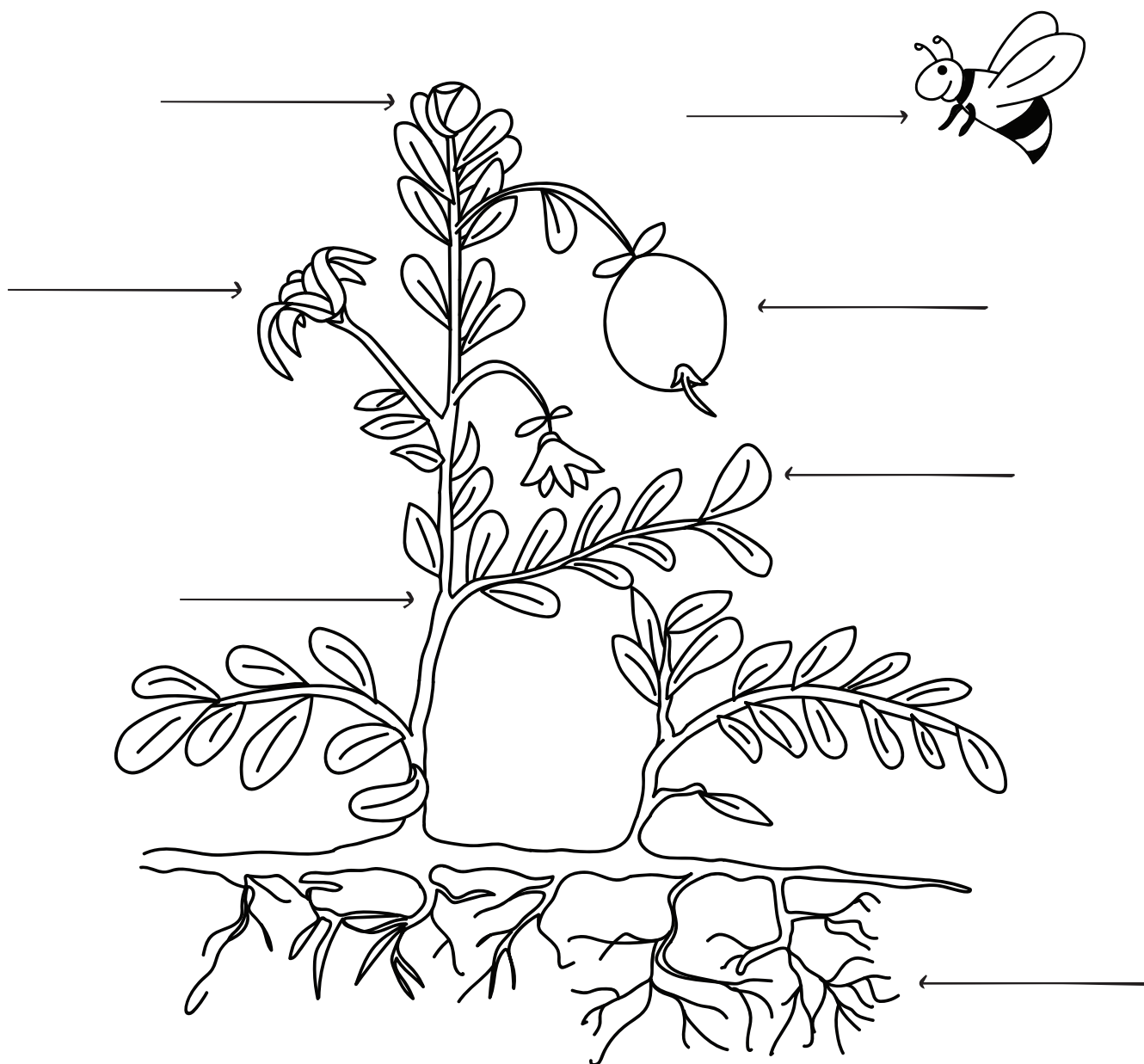


HOW DO CRANBERRIES GROW?



THE CRANBERRY PLANT

 Click [here](https://bit.ly/2XwiLQN) or visit <https://bit.ly/2XwiLQN> to see a real cranberry bog and the parts of a cranberry plant. Label the different parts of a cranberry plant and color it in!



WORD BANK

roots
bud

bee
flower

berry (fruit)
leaves

vine



CRANBERRIES IN THE CLASSROOM



HOW DO CRANBERRIES GROW?



THE CRANBERRY PLANT
ANSWER KEY

